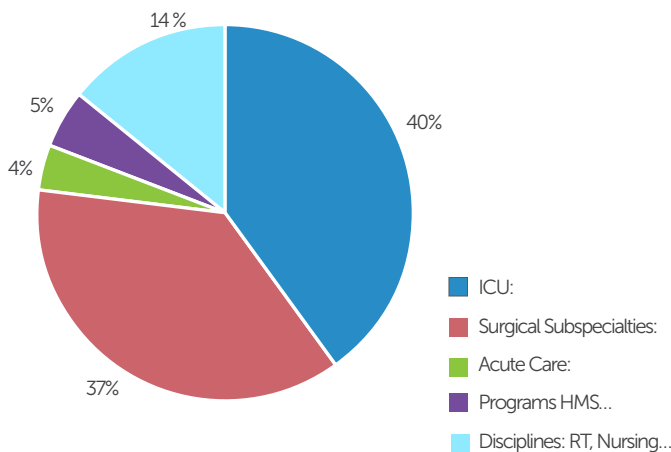


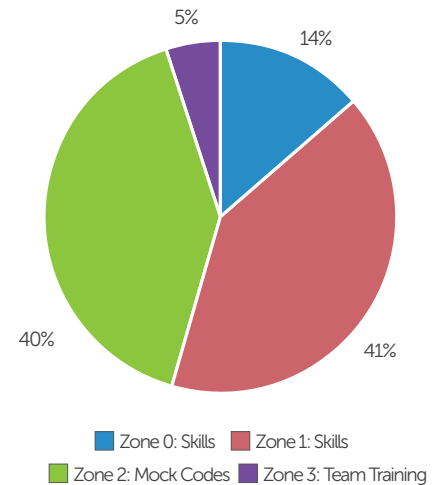


April, 2016 SIM Train Dashboard

April, 2016 Courses per Department



April, 2016 Courses by Zone



Launching Non-Clinical SIM at BCH

In the summer of 2015, the SIMPeds Education Team was approached by Brad McDonald, CHAMPS Manager and Matt Taylor, RN turned analyst to partner together and build a course that could reconnect ISD employees to the pediatric patients within the walls of BCH.

On March 29th, 2016, this innovative design came to life in the form of a customized Zone 3 Team Training.

The participants were welcomed by a high impact panel of clinical leaders including Dan Nigrin, MD, MS, Senior VP and Chief Informatics Officer of Information Services, Mary O'Brien, RN, BSN, Nursing Director of Critical Care Patient Services and Nilesh Mehta, MD, Director of Critical Care Nutrition and Associate Medical Director of the MSICU, to discuss the interplay between the EMR and quality patient care. The group openly discussed successes and challenges throughout the patient care areas in relation to the medical record.

Through the use of simulation methods emphasizing High Reliability, Crisis Resource Management Principles,

and Emotional Intelligence, the participants gained a greater perspective on the clinical aspects of their work. One participant shared, "We work down the street and forget we work for a hospital. This course has given value to what we do..."

Overall, this technologically focused group used simulation to gain a bit of clinical perspective. SIMPeds is planning to continue this interdisciplinary partnership throughout the ISD department one course at a time.



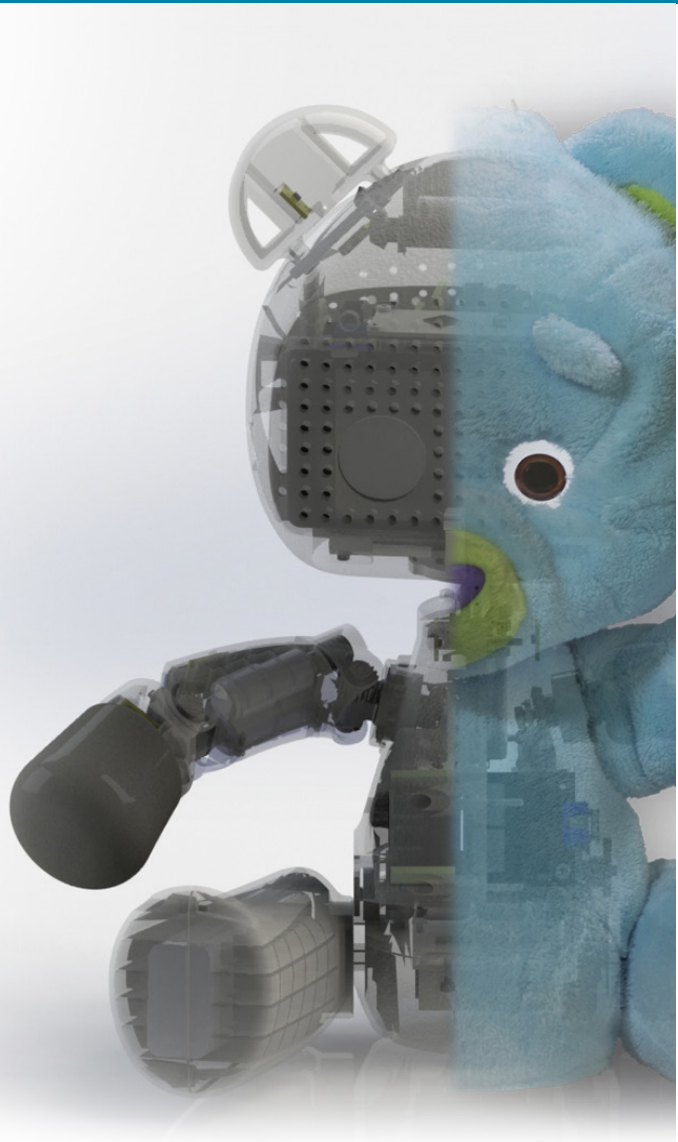


Boston Children's Hospital

Until every child is well™

Simulator Program

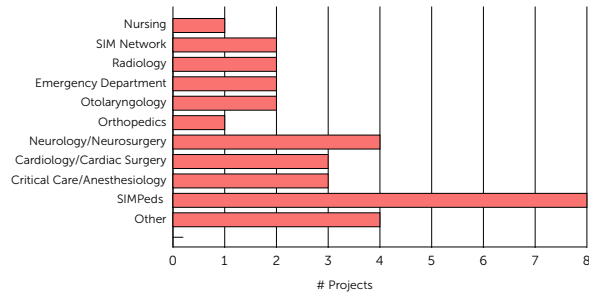
SIMResearch™



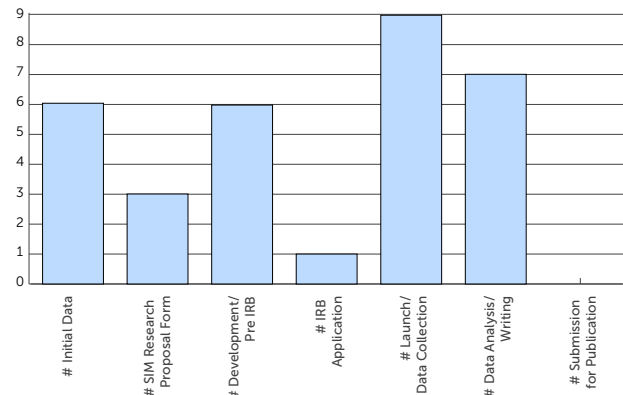
April, 2016

SIM Research Dashboard

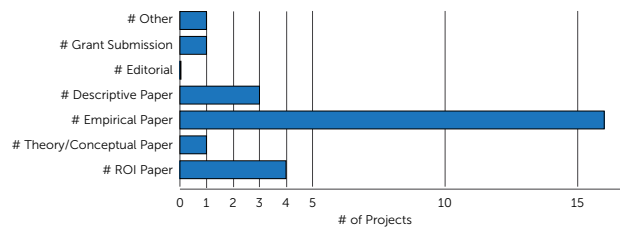
April, 2016 Research Projects by PI Department



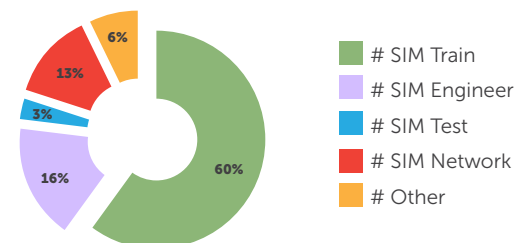
April, 2016 Research Projects by Stage of Development



April, 2016 Type of Project



April, 2016 Projects by Service Line



Need help developing a research idea?

Please reach out to Director of Academics and Research, Christopher Roussin (Christopher.Roussin@ childrens.harvard.edu) or SIMPeds Research Coordinator, Katherine Jamieson (Katherine.Jamieson@ childrens.harvard.edu) for ideas on how to approach simulation research.

Please stay tuned for SIM Journal Club and SIM Writing Club!